

PONSSE



**UNBEATABLE CARRYING
CAPACITY**

PONSSE ELEPHANTKING

SUPERIOR CARRYING CAPACITY AND TRACTIVE FORCE IN EXTREME CONDITIONS

The new PONSSE ElephantKing forwarder is designed for extremely demanding conditions and heavy loads. The ultimate tractive force, powerful engine and the staggering 20-tonne carrying capacity guarantee efficient timber transportation both on sloping sites and during long transports.

PONSSE ElephantKing's frame structure is very rigid, and components and service points have been positioned considering the ease of serviceability. In addition, the machine's service interval has been increased to 1,800 hours. Extremely long service intervals increase effective operating hours and reduce maintenance costs.

The new cabin offers plenty of storage space, the most ergonomic controls available in the market and excellent visibility in every direction. The spacious cabin, ergonomic controls and the ease of maintaining ensure that operators



POWER AND PRECISION ElephantKing's strong hydraulics and precise loader control enable easy and secure loading operation. The loader has a maximum reach up to 9,5 m (31.2 feet).

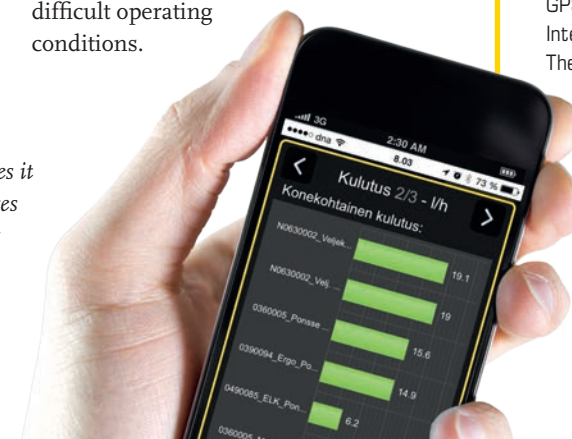


will not feel exhausted while working, thereby improving their overall productivity.

The exceptionally powerful PONSSE K100+ loader, the load space with a cross-sectional area of 6.25 m² and the flexible drive transmission and loader control system ensure the position of the PONSSE ElephantKing

as the most effective forwarder on the market. The durable frame structure, strong bogies, sturdy cylinder-powered frame oscillation lock complete with the high ground clearance ensure smooth operation and carefree operating hours, even under difficult operating conditions.

PONSSE MOBILE FLEET MANAGEMENT makes it possible to use the system with mobile devices (phones and tablets with Windows, iOS or Android operating systems).



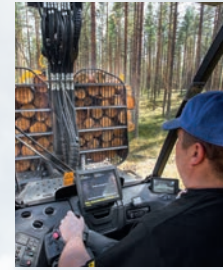
PONSSE FLEET MANAGEMENT

With Fleet Management, machine entrepreneurs can at any time check the location of the forest machine on the map or the current situation of the stand using a computer or mobile device. Forest machines equipped with data transfer and GPS transmit the data automatically to an Internet-based reporting service. The Fleet Management service offers reports to monitor machine production and use, plan and anticipate maintenance, and control low-bed transportation.



PONSSE ELEPHANTKING

TRACTIVE FORCE IN CHALLENGING CONDITIONS



ERGONOMICS

Ergonomics and ease of use are important factors when it comes to productivity. The completely new cabin offers plenty of storage space, the most ergonomic controls available in the market and excellent visibility which is characteristic of all PONSSE forest machines.



TRANSMISSION

The upgraded transmission offers more practical tractive force and an even better feel in all types of terrain.



SERVICEABILITY

Ease of maintenance can be achieved through an improved positioning of service points, service lights and safe service platforms. Furthermore, high quality components enable extremely long service intervals of up to 1,800 hours.



ENGINE

A more powerful next generation Mercedes-Benz engine with higher torque (210 kW / 1150 Nm) is available in Europe. Fewer emissions, more power!



LOADER

Strong loader PONSSE K100+ has a reach of 7.8 or 9.5 m (26 or 31 ft).



ACTIVEFRAME

PONSSE ElephantKing is available with a new cabin suspension system for 8-wheelers. With two part front frame structure it smoothly eliminates the sideways movement directed to the operator.



FRAMES

A simple and strong frame structure. In addition to reliability, the functional positioning and serviceability of components are typical characteristics of the structure.

LESS SERVICE, MORE OPERATION

The new technology and improved hydraulics offer longer service intervals, increasing effective operating hours and reducing operating costs. The service interval of PONSSE forest

machines has been increased from the previous 1,200 hours to 1,800 hours – for more operating time. In addition, easy access to important components speeds up maintenance. Important

developments in the new product series include the positioning of components and service points, as well as the ease of maintenance, as requested by our customers.



SERVICE LIGHTS
Service lights are located in the bumper casings and under the cabin and engine cover



STORAGE SPACE FOR ACCESSORIES
The machine provides plenty of storage space for tools and accessories in various locations.



INSPECTION POINTS
Daily checks are easy to perform without climbing or stretching.



EASY ACCESSIBILITY
Batteries, Webasto heating systems, the central lubrication unit, electrical centre, pneumatic connectors and measuring points are easily accessible under opening bumper casings.



CLARITY FOR MAINTENANCE
Machine designs have been clarified and machine models standardised. In addition, an owner's manual and a service book are always delivered with the machine.



SERVICE PLATFORMS AND STEPS
The anti-slip service platforms and attachments of the new service steps enable easier and safer maintenance procedures.

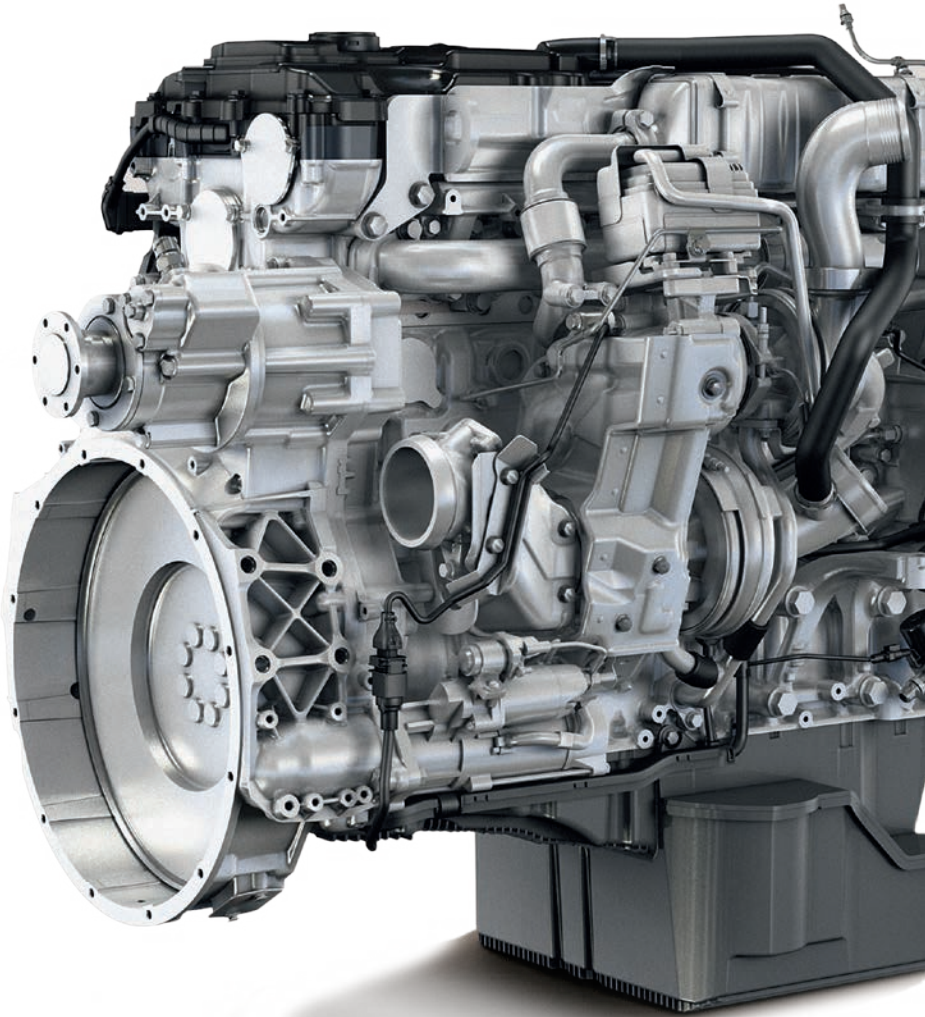
MORE POWER – MORE ECONOMICAL

A strong and eco-friendly six-cylinder Mercedes-Benz engine of the EU Stage IV emission level (210 kW/286 hp, 1,150 Nm) growls in the Ponsse engine compartment. The service interval of EU Stage IV engines has been increased from 600 hours to 900 hours – for longer operating periods*. The SCR exhaust gas after-treatment system and the cooled EGR system significantly reduce NOx and particle emissions.

Benefits of the new technology include a better response to sudden needs of power and better fuel economy. The new transmission and engine technology enable accurate stability control and efficient working in even the most demanding conditions.

** When using Mercedes-Benz 228.5 or 228.51 specification oil.*

Outside European countries a Tier 3 level Mercedes-Benz engine is used, producing 205 kW/275 hp and 1,100 Nm of torque. The reliable and powerful Tier 3 engine has 600 hours service interval and a clear and simple structure for easy maintenance.



THE MOST COMFORTABLE OFFICE IN THE FIELD

THE FULLY UPGRADED PONSSE ELEPHANTKING CABIN offers a viewpoint to the latest forest machine technology. It provides a working environment for skilled professionals who value comfort, safety and ergonomics. The ergonomics of the controls represent the cutting edge of forest machines and, thanks to the large cabin, wide windows and thin window pillars, the visibility from the cabin is excellent in all directions. The PONSSE Comfort forest machine user interface has been developed together with operators and it utilises years of experience.

THE BEST COACH FOR OPERATORS



THE PONSSE ECODRIVE application provides operators with useful and easily understandable information about the use of the machine. Through the machine's control system, it monitors machine load and fuel consumption for each function and indicates in real time whether the operator's working methods and machine controls are economical and efficient. Eco-Drive lets you focus on what is essential in order to develop working methods.

PONSSE ELEPHANTKING

DIMENSIONS

| | |
|------------------------|---|
| Minimum weight | 22 900 kg (50,486 lbs) |
| Typical weight: | 23 700 kg (52,250 lbs) |
| Length: | 10 150-11 060 mm + glide bunk 700 mm (400-435 in + glide bunk 28 in) |
| Width: | 3 070-3 210 mm (121-126 in) |
| Transportation height: | 3 990 mm (157 in) |
| Ground clearance: | 800 mm (31.5 in) |
| Steering angle: | ± 44 degrees |

LOADER

| | |
|-------------------------|---------------------------------|
| Model: | PONSSE K100+ |
| Lifting moment (gross): | 160 kNm (118.001 lb-ft) |
| Reach: | S / M: 7,8 m / 9,5 m (26/31 ft) |

TIRES

| | |
|-----------------|----------------------------|
| Front and rear: | 750/55-26.5", 750/50-26.5" |
|-----------------|----------------------------|

GRAPPLE

| | |
|--------|--|
| Model: | Several different grapple alternatives |
|--------|--|

ENGINE

| | |
|------------------|---|
| Model: | MB OM936 LA EU Stage IV (Europe) MB OM906 LA EU Stage IIIA (other countries) |
| Power: | EU Stage IV: 210 kW (286 hp) IIIA: 205 kW (275 hp) |
| Torque: | 1 200-1 600 rpm (EU Stage IV: 1 150 Nm, IIIA: 1100 Nm) |
| Tractive force: | 240 kN (53,954 lbf) |
| Driving speed: | 0-20 km/h (0-12 mph) |
| Fuel tank volume | 260 l (69 gal US) |

HYDRAULIC SYSTEM

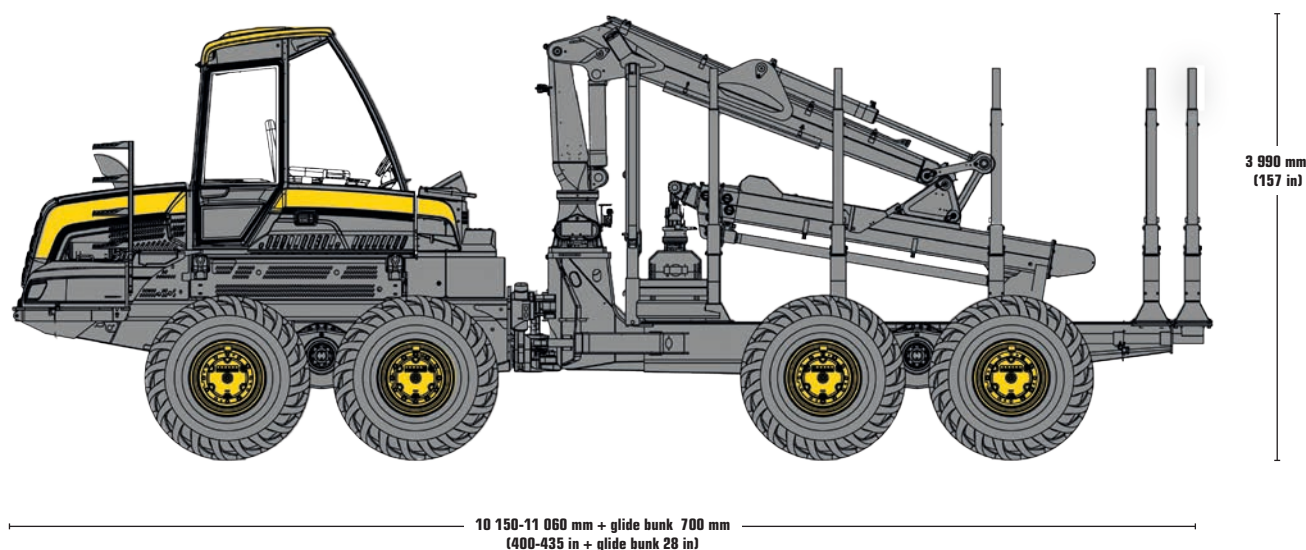
| | |
|------------------|----------------------|
| Control system: | PONSSE OptiControl |
| Working pump: | 190 cm³ (11.6 cu in) |
| Oil tank volume: | 170 l (45 gal US) |

LOAD SPACE

| | |
|-----------------------|---|
| Capacity: | 20 000 kg (44,092 lbs) |
| Load space | |
| cross-sectional area: | 5,8-6,7 m² (62.5-72.1 sq ft) |
| Load space length: | 4 540-5 450 mm + glide bunk 700 mm (179-214 in + glide bunk 28 in) |

Log gate can be moved hydraulically.

PONSSE ELEPHANTKING



Ponsse Plc
Ponssentie 22
FI-74200 Vieremä
FINLAND
Tel. +358 20 768 800
Fax +358 20 768 8690
www.ponsse.com

Ponsse North America, Inc.
4400 International Lane
Rhineland, WI 54501
USA
Tel. 715 369 4833
Fax 715 369 4838

Ponsse UK Ltd.
Unit 3, Broomhouses 1
Industrial Estate
Lockerbie,
DG11 2RZ
UNITED KINGDOM
Tel. +44 1576 203 000
Fax +44 1576 202 202

A logger's best friend

www.ponsse.com

