



PONSSE

A FULLY UPGRADED
POWERHOUSE



PONSSE BEAR



NEW PONSSE BEAR POWER, PRODUCTIVITY AND THE JOY OF WORKING

The completely new PONSSE Bear is a genuine king of the forest.
It represents the best in performance, productivity and serviceability.

The fully upgraded PONSSE Bear – a powerhouse for challenging sites – is now more powerful, reliable and ergonomic. From the very beginning, the upgrade focused on efficiency, structural durability, machine serviceability and usability.

The new cabin offers plenty of storage space, the most ergonomic controls available in the market and excellent visibility. The frame structure is more durable, while the positioning of components and service points emphasises the ease of maintenance. Extremely long service intervals increase effective operating hours and reduce maintenance costs.



POWER FOR THE MOST CHALLENGING LOGGING SITES

The next generation Mercedes-Benz engine of the EU Stage IV emission level not only produces low emissions, but is also more powerful and has higher torque than before. Drivers have shown particular appreciation to the engine's quick reaction to loading. Superior working power is guaranteed by two-circuit hydraulics and the upgraded transmission which offers irresistible tractive force and accurate driving control even on the steepest slopes.

PONSSE BEAR

UPGRADED ON THE TERMS OF USERS



ENGINE

A more powerful next generation Mercedes-Benz engine with higher torque (260 kW / 1400 Nm) in Europe. Less emission, more power!
In other areas a reliable and effective Tier 3 Mercedes-Benz engine.



ERGONOMICS

Ergonomics and ease of use are important factors when it comes to productivity. The completely upgraded cabin offers plenty of storage space, the most ergonomic controls available in the market and the excellent visibility which is characteristic of all PONSSE forest machines.



CRANES

Options include the exceptionally powerful PONSSE C6 sliding boom crane and the PONSSE C55 parallel crane.



FRAMES

A simple and strong frame structure. Functional positioning of components improves serviceability of the machine.



TRANSMISSION

The upgraded transmission offers more practical tractive force and an even better feel in all types of terrain.



SERVICEABILITY

Ease of maintenance can be achieved through an improved positioning of service points, service lights and safe service platforms. Furthermore, high-quality components enable extremely long service intervals of up to 1,800 hours.



SERVICEABILITY

The new technology and improved hydraulics offer longer service intervals, increasing effective operating hours and reducing operating costs. The service interval of PONSSE forest machines has been increased from the previous 1,200 hours to 1,800 hours – for more operating time. In addition, easy access to important components speeds up maintenance. Important developments in the new product series include the positioning of components and service points, as well as the ease of maintenance, as requested by our customers.

The new product series offers easy access to service points and directed service lights to make working easier. Daily refuelling and checkpoints are located in a single place.*

**Electronic refuelling pump available as optional equipment.*

EASE OF MAINTENANCE

- Engine cover that opens fully up electrically from the front allows quicker and easier maintenance.
- Engine checkpoints are easily accessible.
- Batteries, Webasto heating systems, the central lubrication unit, electrical centre, pneumatic connectors and measuring points are easily accessible under opening bumpers.
- Service lights (LED) in the bumpers, under the cabin and engine bonnet.
- Place for a toolbox in the bumper.



ENGINE

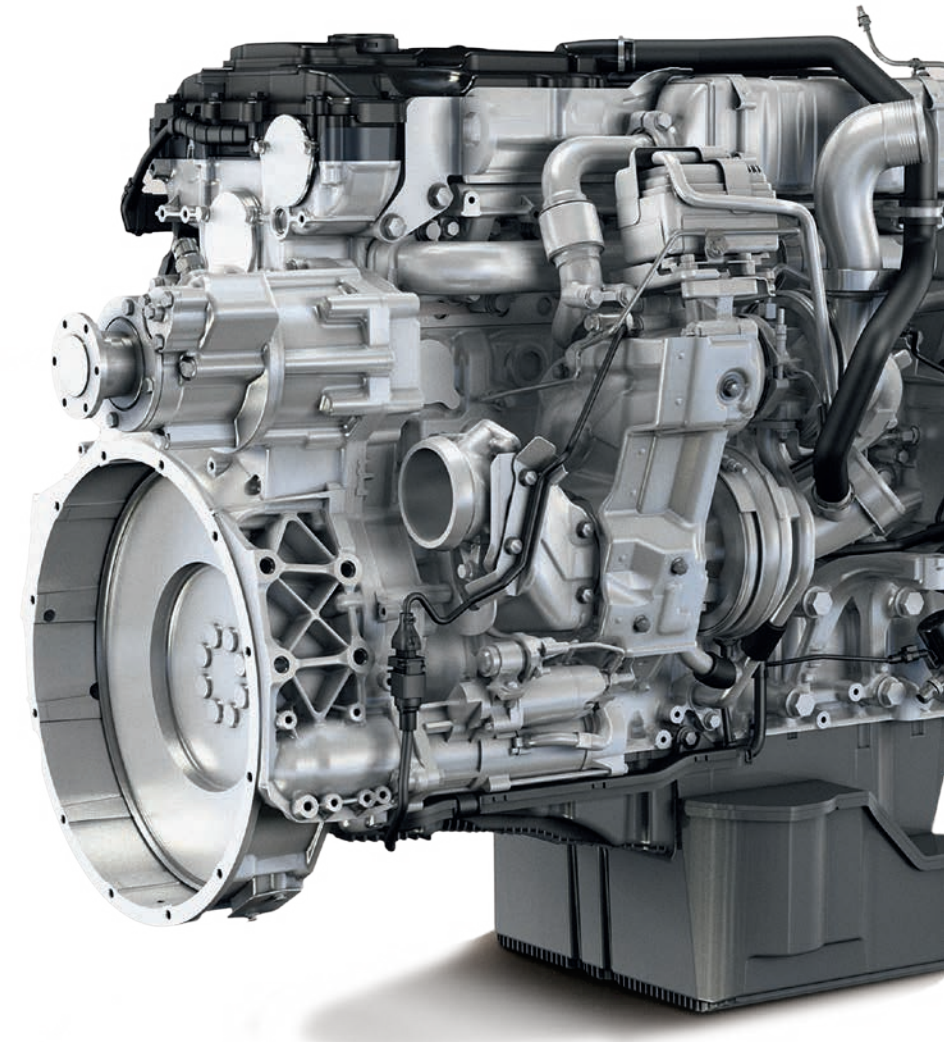
MORE POWER – MORE ECONOMICALLY

A strong and eco-friendly six-cylinder Mercedes-Benz engine of the EU Stage IV emission level (260 kW/350 hp, 1,400 Nm) grows in the Ponsse engine compartment. The service interval of EU Stage IV engines has been increased from 600 hours to 900 hours – for longer operating periods*. The SCR exhaust gas after-treatment system and the cooled EGR system significantly reduce NOx and particulate emissions.

Benefits of the new technology include a better response to sudden needs of power and better fuel economy. Superior working power is guaranteed by double-circuit hydraulics, continuously offering sufficient power for the harvester head and crane. The new transmission and engine technology enable accurate driving control and efficient working in even the most demanding conditions.

Outside European countries a Tier 3 level Mercedes-Benz engine is used, producing 240 kW/322 hp and 1,300 Nm of torque. The reliable and powerful Tier 3 engine has 600 hours service interval and a clear and simple structure for easy maintenance.

**When using Mercedes-Benz 228.5 or 228.51 specification oil.*



A FIVE-STAR WORKSTATION

The fully upgraded PONSSE Bear cabin offers a viewpoint to the latest forest machine technology. It provides a working environment for skilled professionals who value comfort, safety and ergonomics. The ergonomics of the controls represent the cutting edge of forest machines and, thanks to the large cabin, wide windows and thin window pillars, the visibility from the cabin is excellent in all directions. The new PONSSE Comfort forest machine user interface has been developed together with drivers through years of experience.



PONSSE BEAR

DIMENSIONS

Length:	8 990 mm (354 in)
Width:	2 990-3 130 mm (117.7-123 in)
Transportation height:	3 880 mm (152.8 in)
Weight:	23 800 kg (52,470 lbs)
Typical weight:	24 500 kg (54,013 lbs)
Ground clearance:	700 mm (27.6 in)

ENGINE

Model:	MB OM936LA EU Stage IV (Europe) MB OM926LA EU Stage IIIA (other countries)
Power:	EU Stage IV: 260 kW (350 hp) EU Stage IIIA: 240 kW (322 hp)
Torque:	EU Stage IV: 1 400 Nm (1,300-1,600 rpm) EU Stage IIIA: 1 300 Nm (1,200-1,500 rpm)
Tractive force:	230 kN (51,706 lbf)
Fuel tank volume:	400 l (105.6 gal US)

TIRES

Front and rear:	26.5"
-----------------	-------

HYDRAULIC SYSTEM

Control system:	PONSSE OptiControl
Harvester head pump:	190 cm ³ (11.6 cu in)
Crane pump:	190 cm ³ (11.6 cu in)
Hydraulic oil tank volume:	290 l (76.6 gal US)

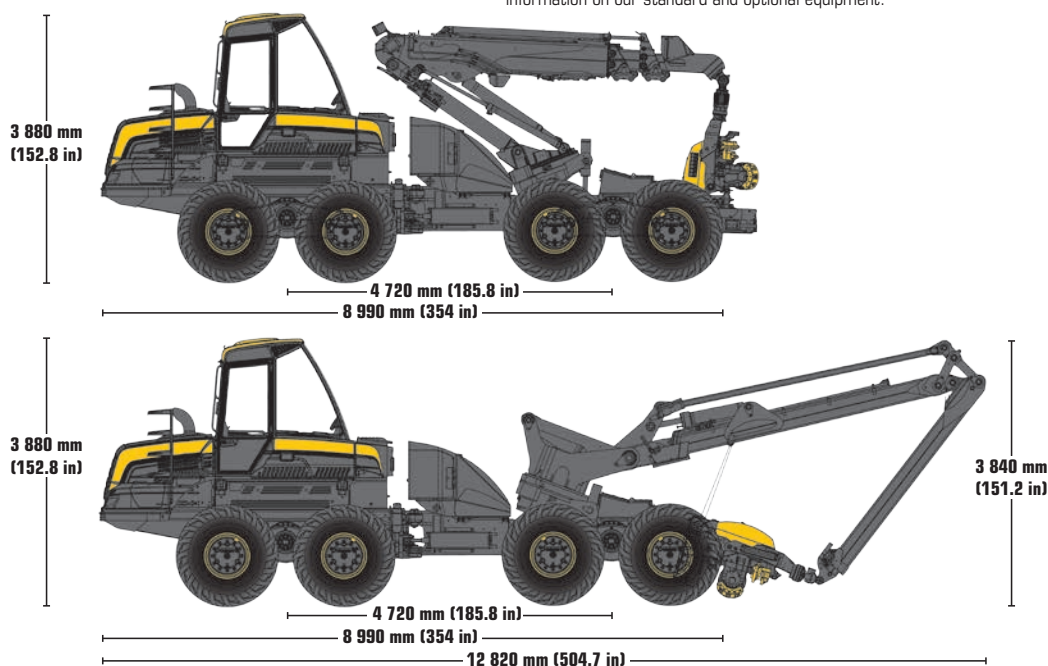
CRANE

Model:	C55	C6
Lifting moment:	255 kNm	310 kNm
Slewing torque:	67 kNm	67 kNm
Turning angle:	250°	250°
Crane tilt angle:	±20°	±20°
Reach:	9.5/11 m (31/36 ft)	8.6/10 m (28/33 ft)

HARVESTER HEAD

Model:	PONSSE H7 PONSSE H8 PONSSE H8 top saw
--------	---

In addition to the comprehensive standard equipment, plenty of optional equipment is available for the PONSSE Bear. Consult your nearest PONSSE retailer for more information on our standard and optional equipment.



The manufacturer reserves the right to make technical changes and improvements.



Ponsse Plc.

Ponssentie 22
FI-74200 Vieremä
FINLAND
Tel. +358 20 768 800
Fax +358 20 768 8690
www.ponsse.com

Ponsse North America, Inc.

4400 International Lane
Rhinelander, WI 54501
USA
Tel. +1 715 369 4833
Fax +1 715 369 4838

Ponsse UK Ltd.

Unit 3, Broomhouses 1
Industrial Estate Lockerbie,
Dumfriesshire DG11 2RZ
UNITED KINGDOM
Tel. +44 1576 203 000
Fax +44 1576 202 202

A logger's best friend

www.ponsse.com