

PONSSE



CLEARLY MORE EFFECTIVE

BEAST OF BURDEN

PONSSE BUFFALO

AN UNSTOPPABLE FORCE

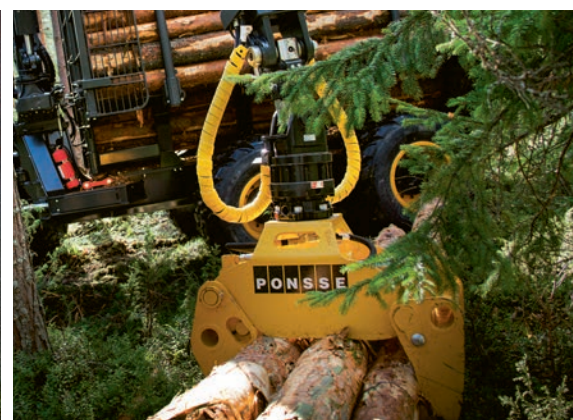
— TRACTION IN ALL TERRAIN TYPES

In addition to the engine upgrade, the PONSSE Buffalo hides a number of other improvements under the surface. We improved the transmission, strengthened the frame and made serviceability easier. The longer service interval keeps your machine even more productive where necessary – at the logging site.

The upgraded PONSSE Buffalo is a genuine all-round general forwarder which feels at home both at regeneration felling and thinning sites. The load-bearing capacity of the Buffalo is 14 tons, and it can be increased up to 15 tons using the balanced rear bogie. The large load space, together with powerful and easy-to-use loader, guarantees that the Buffalo is productive at all sites. The new Mercedes-Benz/MTU engine which meets the requirements of the EU Stage IV emission level offers extreme torque and economy. The upgraded transmission offers more practical tractive force and more accurate stability control.



POWER AND PRECISION Buffalo's strong hydraulics and precise loader control enable easy and secure loading operation. The loaders have a maximum reach up to 10 m (33 feet).



PONSSE Buffalo's frame structure is very rigid, and components and service points have been positioned considering the ease of serviceability. In addition, the machine's service interval has been increased to 1,800 hours. Extremely long service intervals increase effective operating hours and reduce maintenance costs.

PONSSE MOBILE FLEET MANAGEMENT makes it possible to use the system with mobile devices (phones and tablets with Windows, iOS or Android operating systems).

The new cabin offers plenty of storage space, the most ergonomic controls available in the market and excellent visibility.

PONSSE FLEET MANAGEMENT

With Fleet Management, machine entrepreneurs can at any time check the location of the forest machine on the map or the current situation of the stand using a computer or mobile device. Forest machines equipped with data transfer and GPS transmit the data automatically to an Internet-based reporting service. The Fleet Management service offers reports to monitor machine production and use, plan and anticipate maintenance, and control lowbed transportation.



PONSSE BUFFALO 6W AND 8W

GUARANTEED POWER AND COMFORT



ACTIVEFRAME

PONSSE Buffalo is available with a new cabin suspension system for 8-wheelers. With two part front frame structure it smoothly eliminates the sideways movement directed to the operator.



TRANSMISSION

The upgraded transmission offers more practical tractive force and an even better feel in all types of terrain.



SERVICEABILITY

Ease of maintenance can be achieved through an improved positioning of service points, service lights and safe service platforms. Furthermore, high-quality components enable extremely long service intervals of up to 1,800 hours.



ENGINE

A more powerful next generation Mercedes-Benz engine with higher torque (210 kW / 1150 Nm) is available in Europe. Fewer emissions, more power!



LOADER

PONSSE K90+ (7.8/10 m) or K100+ (7.8/9.5 m) available as options.



ERGONOMICS

Ergonomics and ease of use are important factors when it comes to productivity. The completely new cabin offers plenty of storage space, the most ergonomic controls available in the market and the excellent visibility which is characteristic of all PONSSE forest machines.



FRAMES

A simple and strong frame structure. In addition to reliability, the functional positioning and serviceability of components are typical characteristics of the structure.

LESS SERVICE, MORE OPERATION

The new technology and improved hydraulics offer longer service intervals, increasing effective operating hours and reducing operating costs. The service interval of PONSSE forest machines has

been increased from the previous 1,200 hours to 1,800 hours – for more operating time.
In addition, easy access to important components speeds up maintenance.

Important developments in the new product series include the positioning of components and service points, as well as the ease of maintenance, as requested by our customers



SERVICE LIGHTS
Service lights are located in the bumper casings and under the cabin and engine cover.



STORAGE SPACE FOR ACCESSORIES
The machine provides plenty of storage space for tools and accessories in various locations.



INSPECTION POINTS
Daily checks are easy to perform without climbing or stretching.



EASY ACCESSIBILITY
Batteries, Webasto heating systems, the central lubrication unit, electrical centre, pneumatic connectors and measuring points are easily accessible under opening bumper casings.



CLARITY FOR MAINTENANCE
Machine designs have been clarified and machine models standardised. In addition, an owner's manual and a service book are always delivered with the machine.



SERVICE PLATFORMS AND STEPS
The anti-slip service platforms and attachments of the new service steps enable easier and safer maintenance procedures.

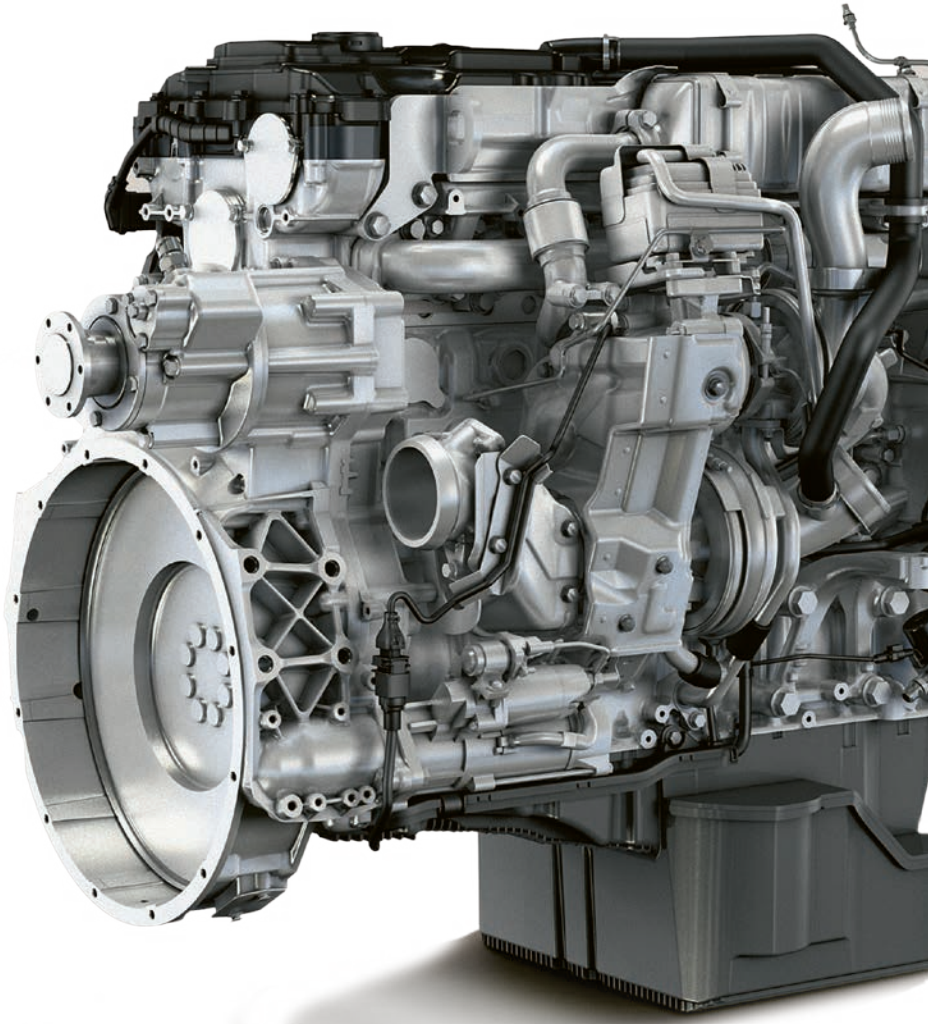
MORE POWER – MORE ECONOMICAL

A strong and eco-friendly six-cylinder Mercedes-Benz engine of the EU Stage IV emission level (210 kW/286 hp, 1,150 Nm) grows in the Ponsse engine compartment. The service interval of EU Stage IV engines has been increased from 600 hours to 900 hours – for longer operating periods*. The SCR exhaust gas after-treatment system and the cooled EGR system significantly reduce NOx and particle emissions.

Benefits of the new technology include a better response to sudden needs of power and better fuel economy. The new transmission and engine technology enable accurate stability control and efficient working in even the most demanding conditions.

**When using Mercedes-Benz 228.5 or 228.51 specification oil.*

Outside European countries a Tier 3 level Mercedes-Benz engine is used, producing 205 kW/275 hp and 1,100 Nm of torque. The reliable and powerful Tier 3 engine has 600 hours service interval and a clear and simple structure for easy maintenance.



THE MOST COMFORTABLE OFFICE IN THE FIELD

THE FULLY UPGRADED PONSSE BUFFALO CABIN offers a viewpoint to the latest forest machine technology. It provides a working environment for skilled professionals who value comfort, safety and ergonomics. The ergonomics of the controls represent the cutting edge of forest machines and, thanks to the large cabin, wide windows and thin window pillars, the visibility from the cabin is excellent in all directions. The PONSSE Comfort forest machine user interface has been developed together with operators and it utilises years of experience.

THE BEST COACH FOR OPERATORS



THE PONSSE ECODRIVE application provides operators with useful and easily understandable information about the use of the machine. Through the machine's control system, it monitors machine load and fuel consumption for each function and indicates in real time whether the operator's working methods and machine controls are economical and efficient. Eco-Drive lets you focus on what is essential in order to develop working methods.

PONSSE BUFFALO

DIMENSIONS

Minimum weight:	6-wheeler 17 200 kg (37,919 lbs) 8-wheeler 18 600 kg (41,005 lbs)
Typical weight:	6-wheeler 18 400 kg (40,565 lbs) 8-wheeler 19 800 kg (43,651 lbs)
Length:	9 610–10 770 mm + glide bunk 700 mm (378–424 in + glide bunk 28 in)
Width:	2 895–3 085 mm (114–121 in)
Transportation height:	3 860 mm (152 in)
Ground clearance:	680 mm (26 in)
Steering angle:	± 44 degrees
Outer turning radius:	7 960 mm (26.1 ft) (short rear frame)

LOADER

Model:	PONSSE K90+ / K100+
Lifting moment (gross):	K90+: 140 kNm (103.259 lb-ft) K100+: 160 kNm (118.009 lb-ft)
Reach:	K90+ S / M: 7.8/10 m (26/33 ft) K100+ S / M: 7.8/9.5 m (26/31 ft)

TYRES

6-wheeler	34" Front	26.5" Back
8-wheeler	26.5" Front	26.5" Back

ENGINE

Model:	Mercedes-Benz OM936 LA EU Stage IV (Europe) Mercedes-Benz OM906 LA EU Stage IIIA (other countries)
Power:	EU Stage 4: 286 hp, 3A: 275 hp (4F: 210 kW, 3A: 205 kW)
Torque:	1 200–1 600 rpm (EU Stage 4: 1 150 Nm, 3A: 1100 Nm)
Tractive force:	185 kN (41,589 lbf)
Driving speed :	0–20 km/h (0–12 mph)
Fuel tank volume:	200 l (53 gal US)

HYDRAULIC SYSTEM

Control system:	PONSSE OptiControl
Working pump:	190 cm³ (11.6 cu in)
Oil tank volume:	170 l (45 gal US)

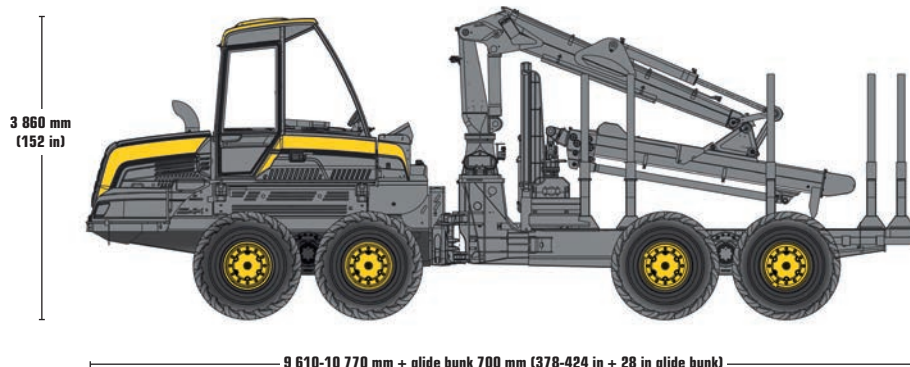
GRAPPLE

Model:	Several different grapple alternatives
--------	--

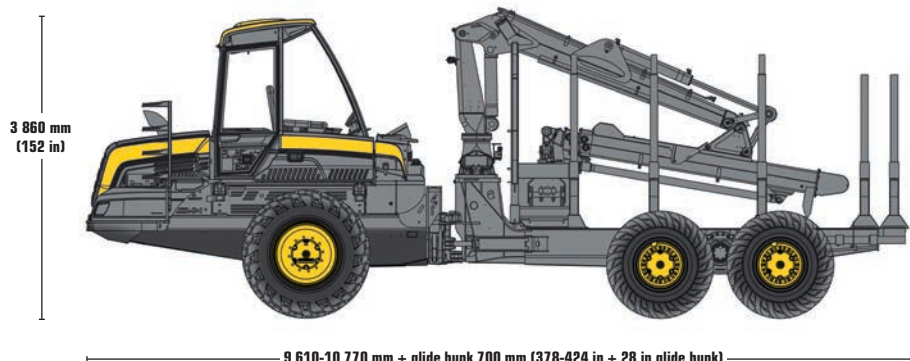
LOAD SPACE

Capacity:	14 000 kg (30,865 lbs) 15 000 kg (33,069 lbs) with balanced bogies
Load space cross-sectional area:	4.5–5.5 m² (48–59 sq ft)
VLA:	4.5–6.0 m² (48–65 sq ft)
Load space length:	4 210–5 410 mm + glide bunk 700 mm (165–238 in + glide bunk 28 in)
Log gate can be moved hydraulically.	

PONSSE BUFFALO 8W



PONSSE BUFFALO 6W



Ponsse Plc

Ponssentie 22
FI-74200 Vieremä
FINLAND
Tel. +358 20 768 800
Fax +358 20 768 8690
www.ponsse.com

Ponsse North America, Inc.

4400 International Lane
Rhineland, WI 54501
USA
Tel. 715 369 4833
Fax 715 369 4838

Ponsse UK Ltd.

Unit 3, Broomhouses 1
Industrial Estate
Lockerbie,
Dumfriesshire DG11 2RZ
UNITED KINGDOM
Tel. +44 1576 203 000
Fax +44 1576 202 202

A logger's best friend

www.ponsse.com